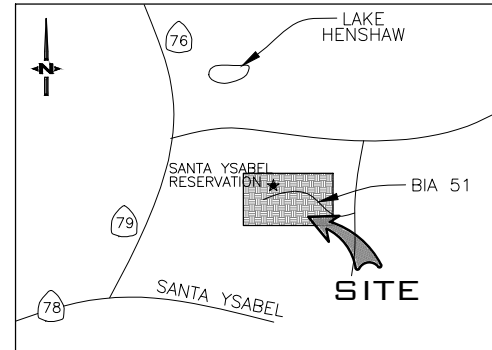


# IHBD SAN FELIPE NEW SUB RES

## BIA RT 51, SANTA YSABEL RESERVATION, PALOMAR-JULIAN, CA

WORK ALONGSIDE OH JOB 3-522357



**VICINITY MAP**  
NO SCALE 1095

### NOTES

- CUSTOMER IS RESPONSIBLE FOR:
- \*TRENCH, EXCAVATION AND BACKFILL
  - \*CONDUIT (INCLUDING REDUCERS & ADAPTERS AT HANDHOLES)
  - \*SUBSTRUCTURES
  - \*CONCRETE/SIDEWALK BREAK & REPAIR
  - \*RETAINING WALLS

MAINTAIN A MINIMUM OF 5' WHEN PARALLELING WET UTILITIES 6' WHEN CROSSING

MAINTAIN 11FT CLEARANCE BETWEEN TRANSFORMER PADS AND ALL WINDOW OPENINGS

STANDARD CONDUIT BENDS TO BE USED:

	CONDUIT BENDS (EXCEPT CP)		CP BENDS
	PRIMARY	SECONDARY	
3'	36", 90 DEGREE BEND	36", 90 DEGREE BEND	36", 90 DEGREE BEND
4'	36", 90 DEGREE BEND	36", 90 DEGREE BEND	48", 90 DEGREE BEND

\*ALL HORIZONTAL BENDS WILL BE MADE WITH 25 FOOT RADIUS SWEEPS AS PER STD. PG.3374 UNLESS OTHERWISE NOTED

ALL 100A PANELS REQUIRE 1-3" SERVICE CONDUIT. SINGLE PHASE 3 WIRE 120/240V 200A METER SHOULD HAVE 4 METER CLIPS (SG516)

SERVICE CABLE PULL CANS/SECTIONS REQUIRING 3" CONDUITS MUST ALLOW A MINIMUM OF 3FT CLEAR & LEVEL WORKING SPACE IN FRONT OF THE PULL CAN/SECTION.

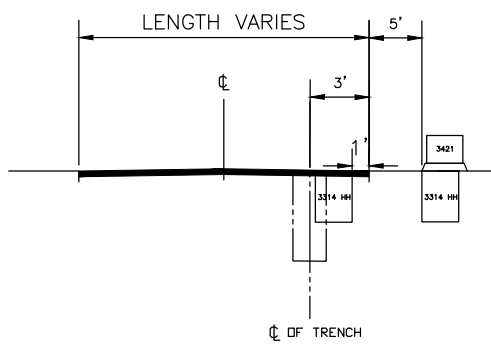
ALL SERVICES TO BE INSTALLED ON MASTER SERVICE ORDER TO BE WRITTEN BY THE PLANNER.

IT IS THE CUSTOMER'S RESPONSIBILITY TO PROVIDE TRENCH AND CONDUIT TO THE ENERGIZED SOURCE. EMPTY CONDUIT STUBS ARE INSTALLED FOR THE FUTURE USE OF THE UTILITY. IF THE STUB IS UNUSABLE, THE CUSTOMER MAY CLEAN OR REPAIR THE STUB, OTHERWISE, INSTALL NEW TRENCH AND CONDUIT TO THE SOURCE.

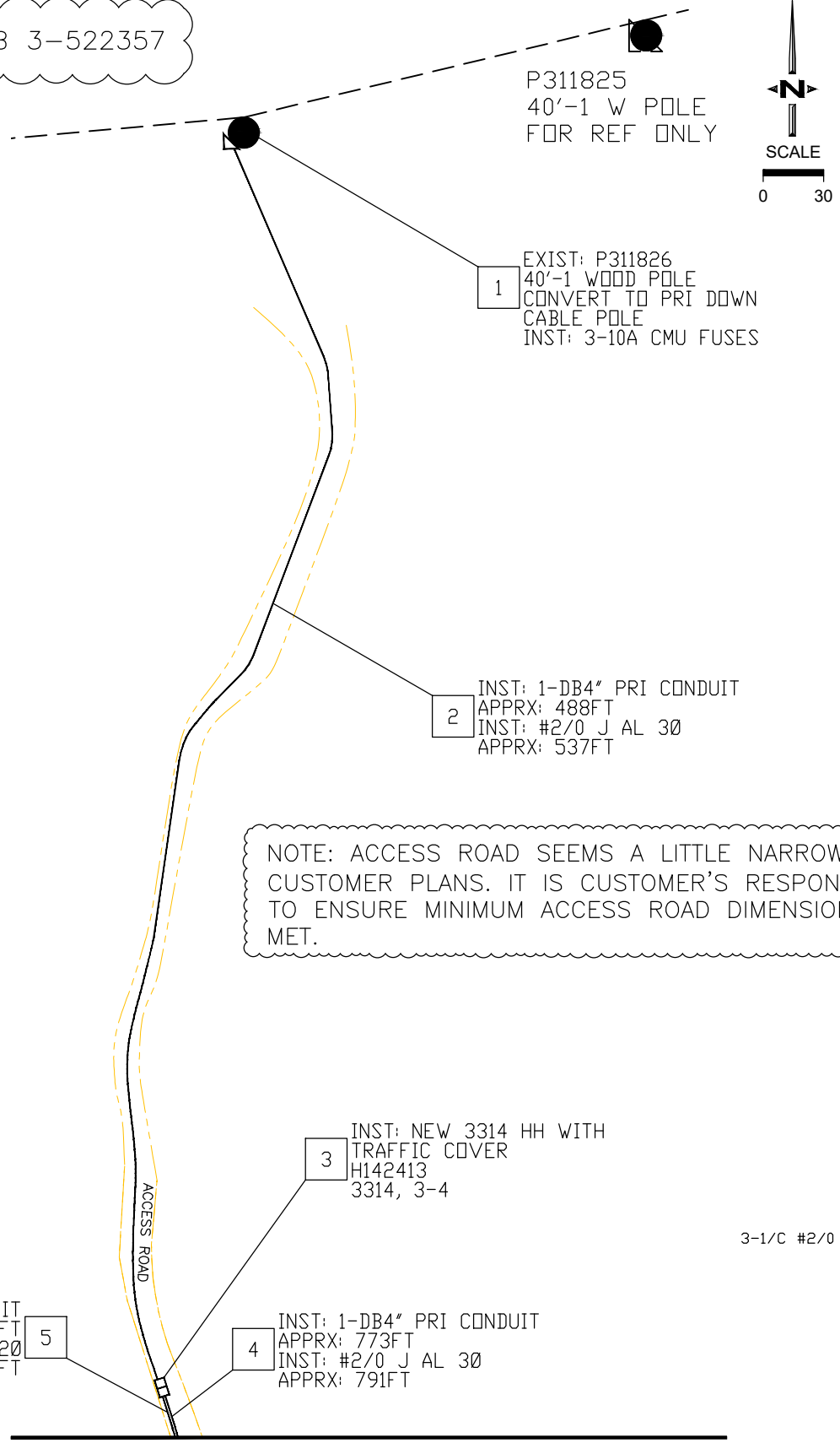
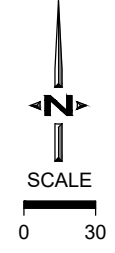
24 HOUR LINE TRUCK ACCESS TO SDG&E DISTRIBUTION AND SERVICE FACILITIES REQUIRED.

CUSTOMER IS RESPONSIBLE TO PROVIDE ALL RED STUB MARKERS AND THE BURIED BALL MARKERS AT EACH SERVICE STUB LOCATION.

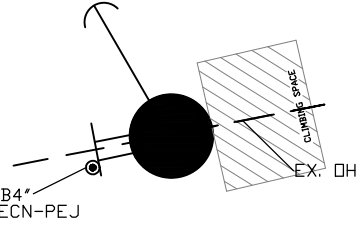
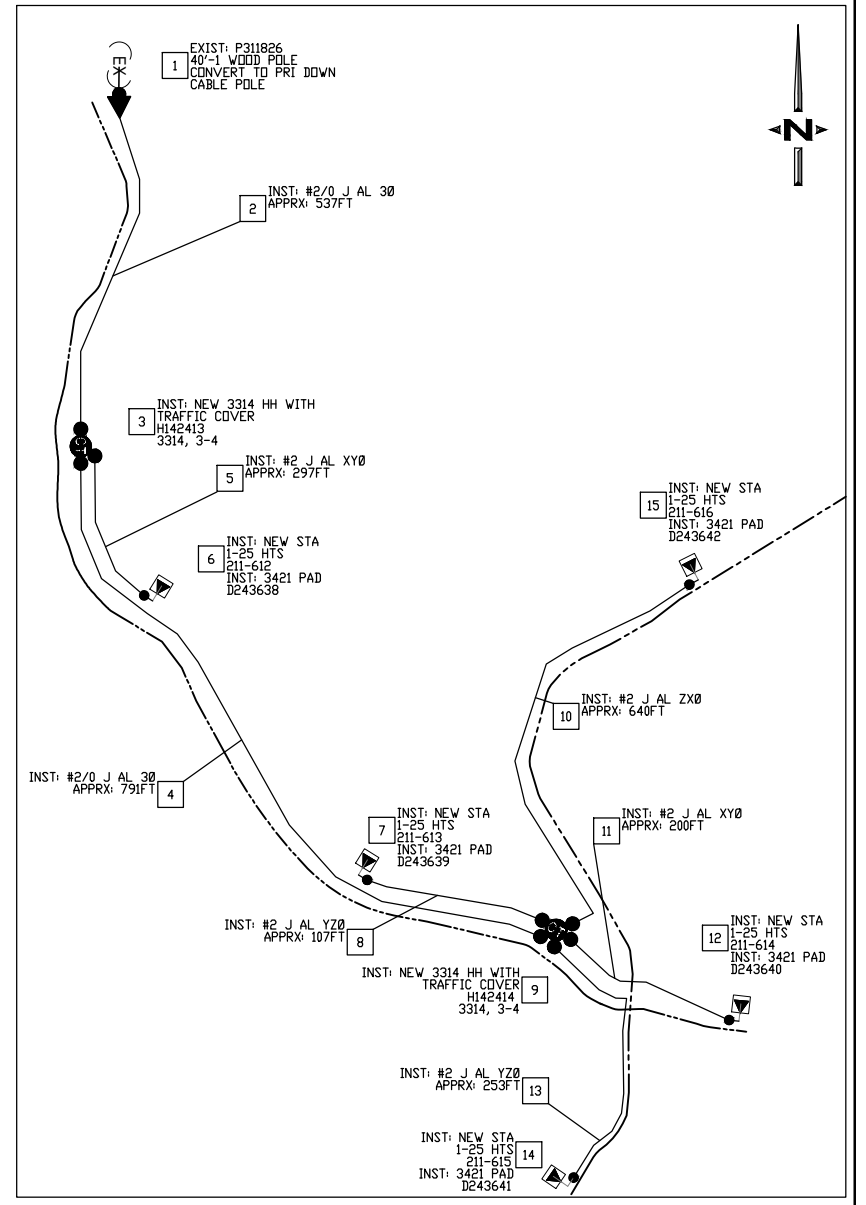
CUSTOMER REP: IIPAY NATION OF SANTA YSABEL  
PHONE: (760) 765-0845



**TYPICAL STREET SECTION**  
NO SCALE



NOTE: ACCESS ROAD SEEMS A LITTLE NARROW ON CUSTOMER PLANS. IT IS CUSTOMER'S RESPONSIBILITY TO ENSURE MINIMUM ACCESS ROAD DIMENSIONS ARE MET.



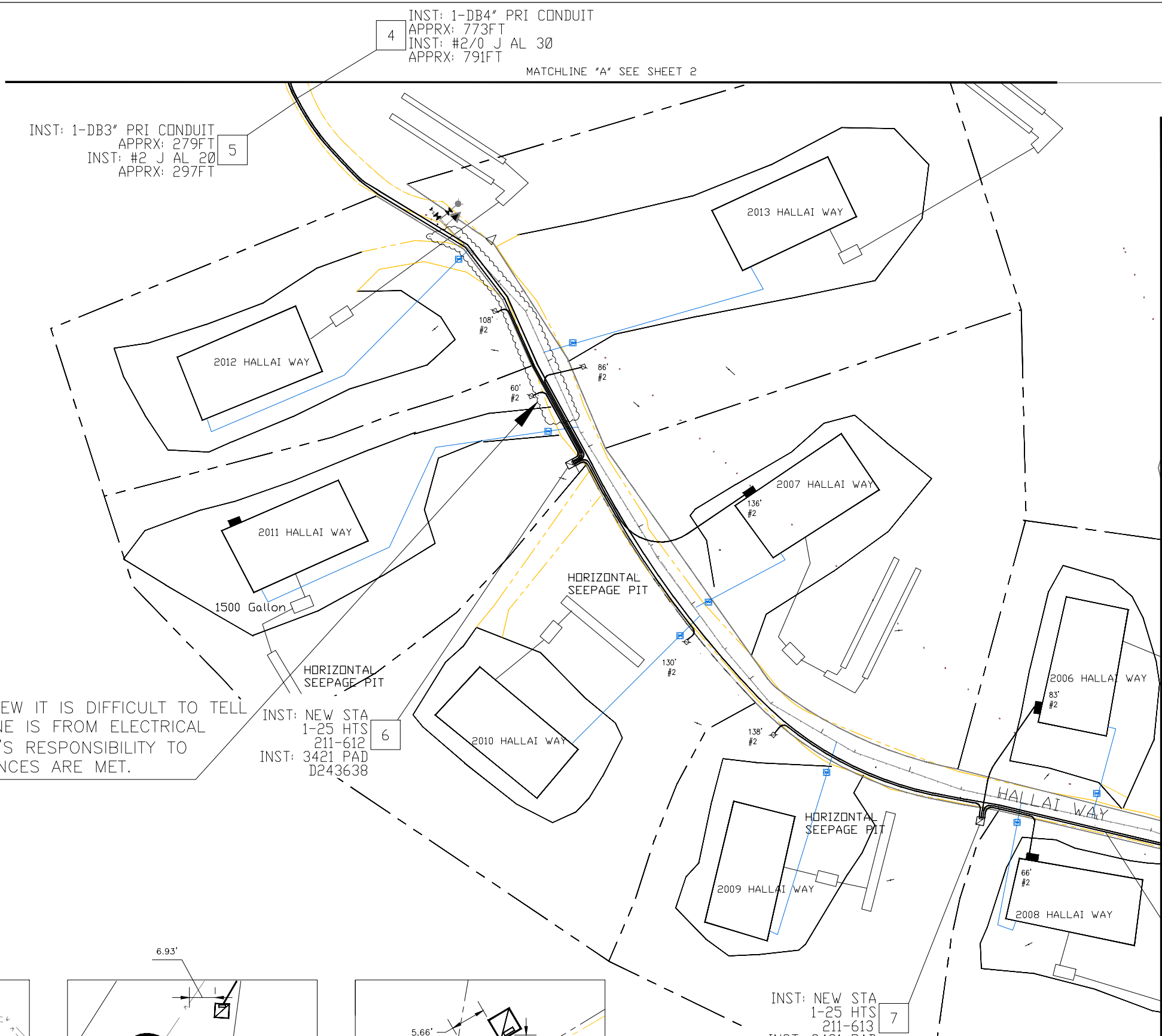
**POLE DETAIL**  
P311826 1



Call 811: Two Working Days Before You Dig!

San Diego Gas & Electric Design & Project Management Scompra Energy utility PROJECT MGR/PLANNER NAME & PHONE: <b>SANDRA BLACK</b> (805) 501-7917 DESIGNED BY: <b>RUBEN DIAZ CARRILLO</b> REVIEWED BY: <b>CORY MOORE</b>	PROJECT NOTIFICATION # 300000511540
	JOB NOTIFICATION # 300000522356
DATE: 4/4/2023	SHEET <b>UD01</b> SHT 1 OF 3
	FCD <b>0</b>

MATCHLINE "A" SEE SHEET 2



INST: 1-DB3" PRI CONDUIT  
APPRX: 279FT  
INST: #2 J AL 20  
APPRX: 297FT

4  
INST: 1-DB4" PRI CONDUIT  
APPRX: 773FT  
INST: #2/0 J AL 30  
APPRX: 791FT

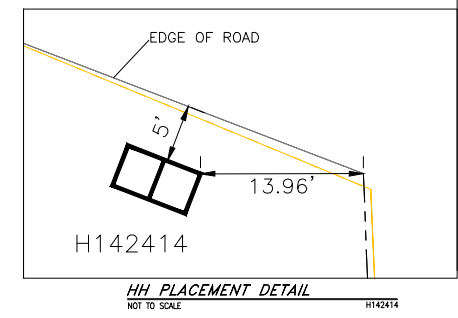
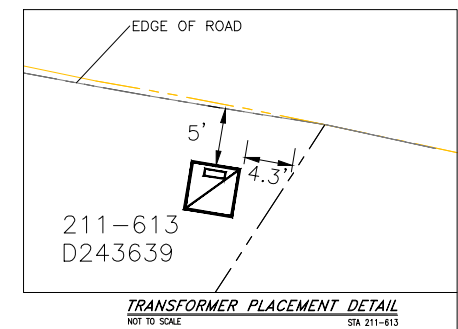
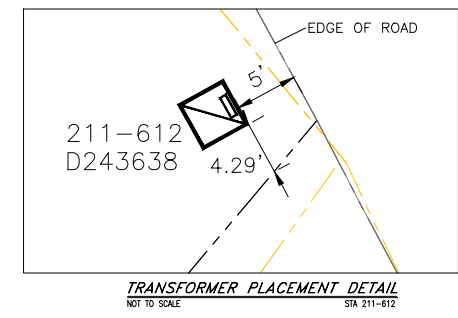
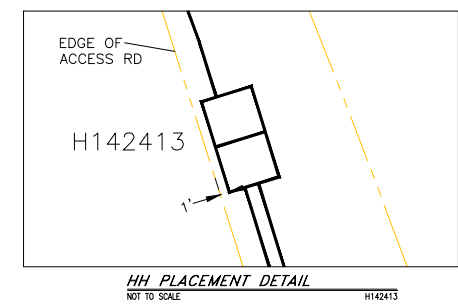
MATCHLINE "A" SEE SHEET 2

6  
INST: NEW STA  
1-25 HTS  
211-612  
INST: 3421 PAD  
D243638

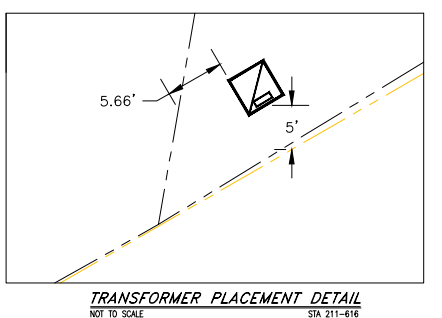
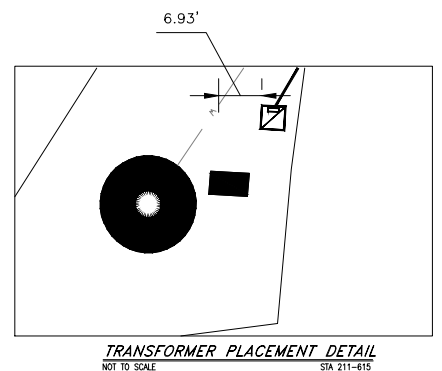
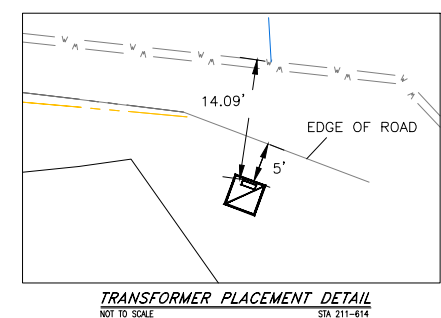
7  
INST: NEW STA  
1-25 HTS  
211-613  
INST: 3421 PAD  
D243639

8  
INST: 1-DB3" PRI CONDUIT  
APPRX: 97FT  
INST: #2 J AL 20  
APPRX: 107FT

NOTE: WITHOUT STREET VIEW IT IS DIFFICULT TO TELL HOW FAR WATER MAIN LINE IS FROM ELECTRICAL TRENCH. IT IS CUSTOMER'S RESPONSIBILITY TO ENSURE MINIMUM CLEARANCES ARE MET.



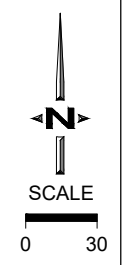
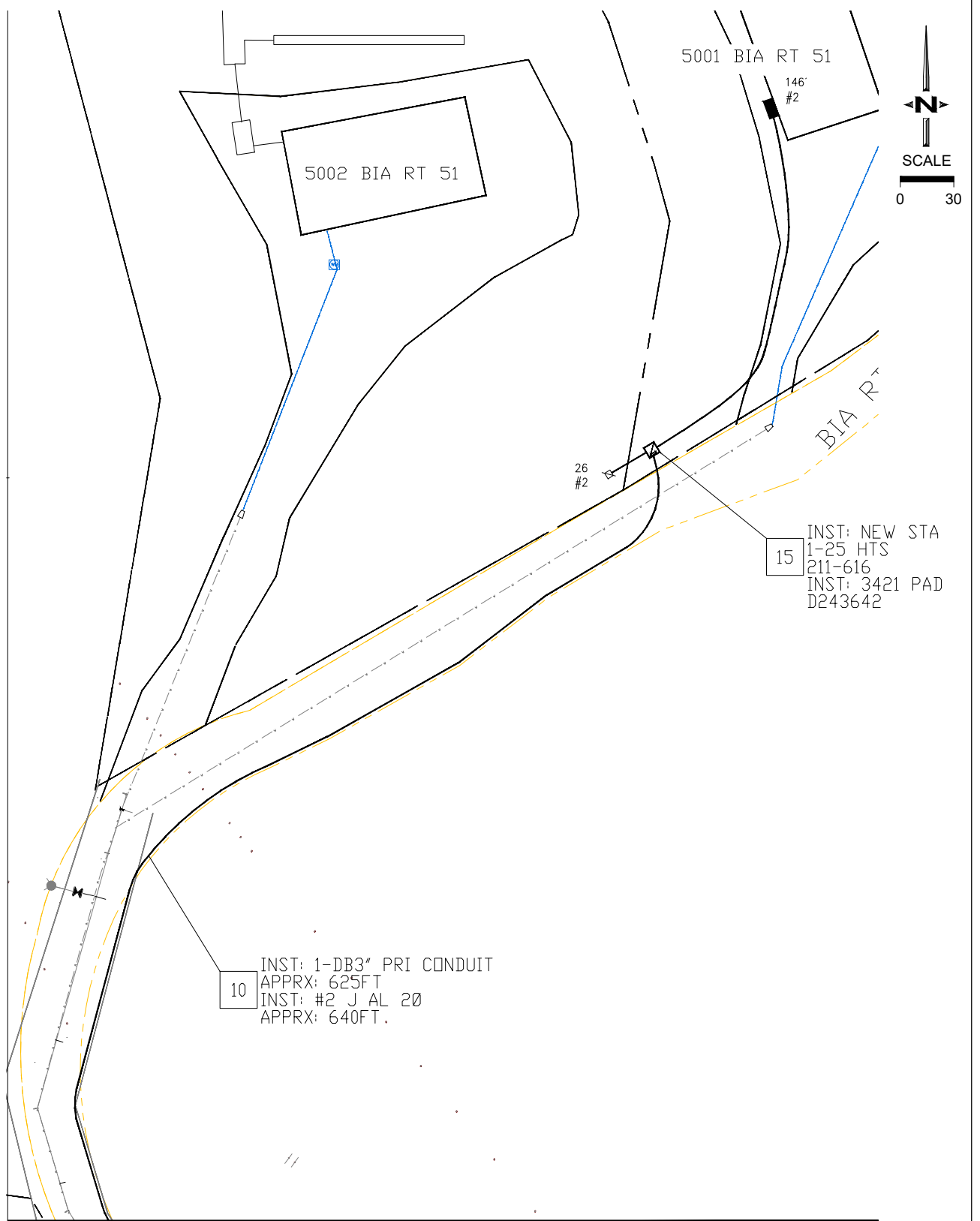
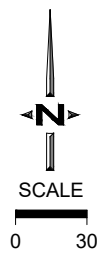
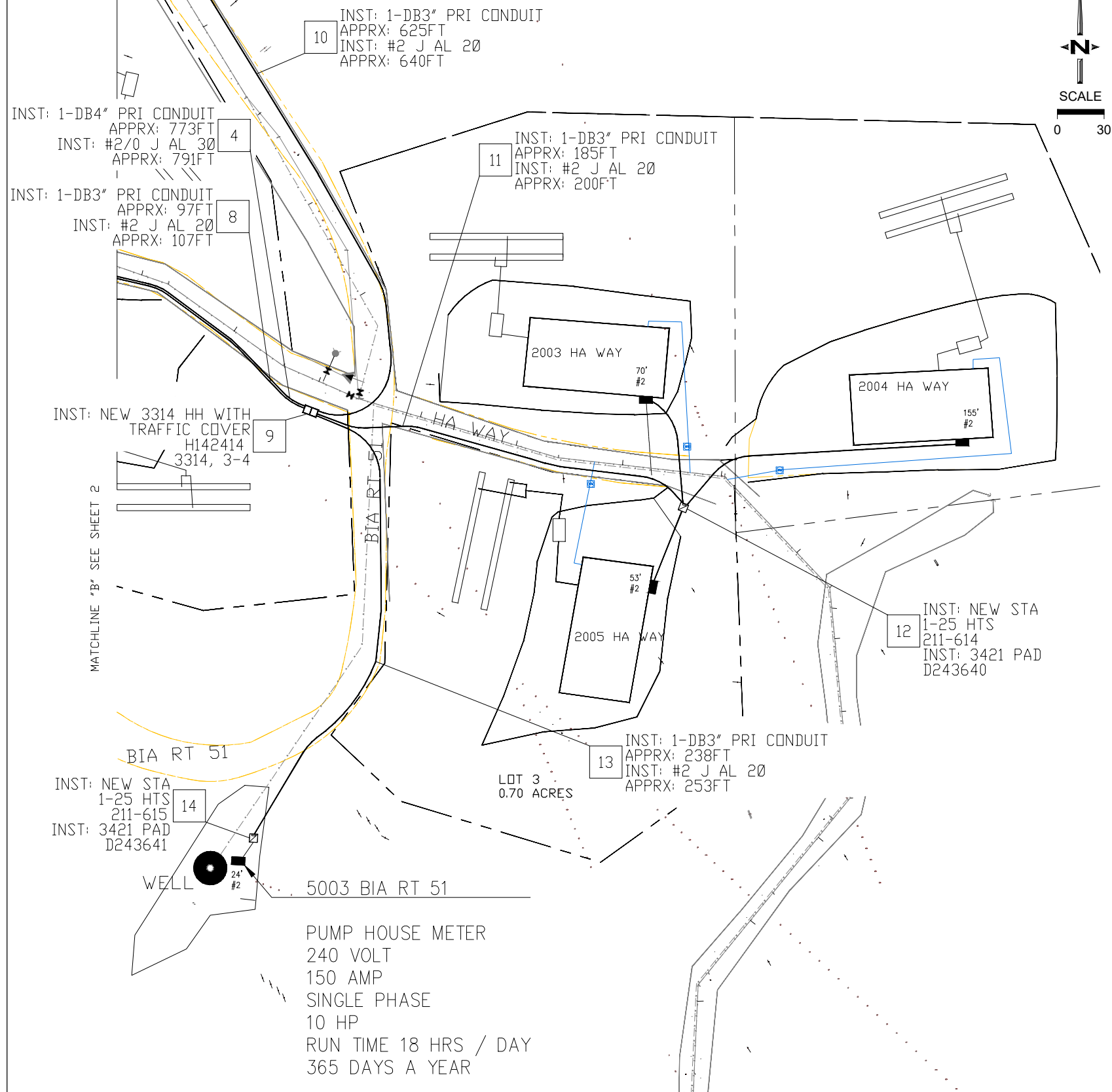
MATCHLINE "B" SEE SHEET 3



Call 811: Two Working Days Before You Dig!

<b>SDGE</b> San Diego Gas & Electric Design & Project Management <small>San Diego Gas &amp; Electric Utility</small>	PROJECT NOTIFICATION #	300000511540
	JOB NOTIFICATION #	300000522356
PROJECT MGR/PLANNER NAME & PHONE: <b>SANDRA BLACK</b> (805) 501-7917	DATE:	4/4/2023
DESIGNED BY:	SHEET	FCD
<b>RUBEN DIAZ CARRILLO</b>	<b>UD02</b>	<b>0</b>
REVIEWED BY:	SHT 2 OF 3	
<b>CORY MOORE</b>		

MATCHLINE "C" SEE SHEET 3



MATCHLINE "C" SEE SHEET 3



Call 811: Two Working Days Before You Dig!

**SDGE** San Diego Gas & Electric Design & Project Management  
 PROJECT MGR/PLANNER NAME & PHONE:  
**SANDRA BLACK**  
 (805) 501-7917  
 DESIGNED BY:  
**RUBEN DIAZ CARRILLO**  
 REVIEWED BY:  
**CORY MOORE**

PROJECT NOTIFICATION #	300000511540
JOB NOTIFICATION #	300000522356
DATE:	2/21/2023
SHEET	FCD
<b>UD03</b>	<b>0</b>
SHT 3 OF 3	